



# Corporate Profile

Alpha Three Co.Ltd

# Greetings

I, Sueko Uehara, have been in counseling and consulting industries for over 27 years. I would like to share my experiences with you about how I started this spa business. While traveling to Taiwan, I fell ill and upon going to the local hospital, I was prescribed a “foot massage” rather than an injection or other pharmaceutical medicine. I noticed almost immediately the effectiveness of this kind of medicine with only the first treatment.

In France as well, I have heard of sudden hearing loss being treated with this same technique, stimulating the lymphatic system through certain points in the foot. People soon become completely cured of the condition.

Foot massage is not uncommon in Japan now, but it was mostly unknown in those days. Naturally I wanted to learn more about this kind of therapy and to share this experience which had helped me. I have seen many people suffer from stress, such as the everyday stresses found in social relations at work, and found myself interested to relieve this fatigue both mentally and physically. Three years have passed since that time and has led me to develop a new “healing touch”. This is what I call the “Image System”.

Image System focuses on stimulating the reflex areas of the sole of the foot while incorporating an array of other healing methods. In the actual therapy, the hospitalist finds the optimal healing touch by determining the condition of each customer’s foot. This is done while using elements of relaxation therapy in order to achieve the highest efficacy for body and mind. We also provide other services on our menu, such as facial and body care. We are committed to the highest quality of relaxation.

Taiwanese have a very high awareness of health and beauty, and I believe both Japanese and Taiwanese women experience stress equally. Using Taiwanese techniques, I would like to perform health and beauty services from a holistic approach using the new Image System.



### Sueko Uehara

Alpha Three Ltd., Representative Director  
Japan Spa Association President  
Resident of Okinawa prefecture

Experienced in corporate consultation and counseling practices. Studied how to provide a comfortable and effective therapy for Japanese clients, then created an original technique. Opened “Healing Room Image” at Nakameguro, Tokyo in March 1996.

At present works as direct store management, manager of hotel spa, manager of eyelash salon, human resources, and spa consultant.

Also focused on educational activities of spa services such as raising awareness through seminars. Served as chairman of Japan Spa Association (formerly NPO Japan Spa Association).



## Corporate Profile

We deploy “Image” direct management shops, hotel spa management, and eyelash salons which are founded on the concept of “only humans can heal humans”.

We have a varied menu of aroma treatment, facial care, and shape-up options for females in order to provide treatment for mental relaxation and restoration. Our sole therapy is based on the concept of a connected body and mind.

We introduce our original methods which have been show to be effective for Japanese clientele.

The original method was developed through years of research and experience, and aims to create an extraordinary hospitality experience.

Sueko Uehara, the president of our company, researches Oriental and Western relaxation and sole therapy techniques, as well as making use of her experience as a mental trainer.

Sale of original cosmetics "SUE".

Mail order business has also been expanded.

### 【Corporate Profile】

Company name	Alpha Three Co. Ltd
Established	January, 1991
Capital	20,000,000 yen
Representative Director	Sueko Uehara
Address	2-15-6 Kamimeguro-Meguro-Tokyo. Building Kawanabe 4F
Dealing Banks	Bank of Mitsubishi-Tokyo-UFJ. Bank of Mizuho. Bank of Ryukyu
Employee	50 employees

## Management store introduction

### 【Direct management shop】

SPA IMAGE Headoffice	3-2-2 kamimeguro-Meguroku-Tokyo Hitsujiya / Building 1F.
Ginza Core	5-8-20 Ginza-Chuoku-Tokyo / Ginza Core 5F.
Melsa Sakae	3-4-5 Sakae-Nakaku-Nagoya-Aichi. / Melsa Sakae 4F.
Naha Airport	150 Kagamizu-Naha-Okinawa / 3F

### 【 Hotel Spa contracted management 】

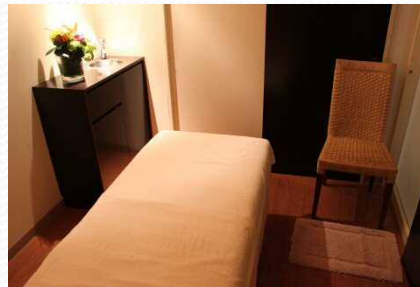
SPA IBUKI	3-3-1 Shibakouen-Minatoku-Tokyo / Tokyo Prince Hotel 11F.
KAEDE SPA	144 Motohakone-Hakonemachi-Ashigarashimogun-Kanagawa / The prince Hakone.
Spa ASAGAO	139-Motohakone-Hakonemachi-Ashigarashimo-Kanagawa./ onsen RYUGUDEN
SPA THE CEADA	1 Kankaiji-Beppu-Oita / Hotel Suginoi .

### 【Alpha Three Spa Management Philippines, Inc.】

11th Floor, SM Aura Office Tower, 26th St., cor. McKinley Parkway, Fort Bonifacio,  
Bonifacio Global City, Taguig City, Fourth District, NCR, Philippines, 1634

# Management store introduction /Direct management shop

- SPA IMAGE the head office. 3-2-2 Kamimeguro-Meguroku-Tokyo. / Hitsujiya-Building 1F.



- GINZA CORE 5-8-20. Ginza-Chuoku-Tokyo./ Ginza Core 5F.

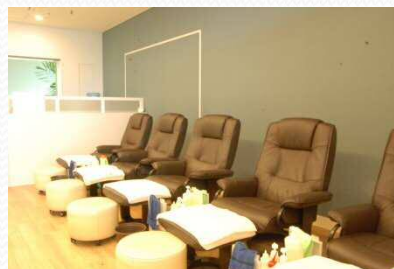
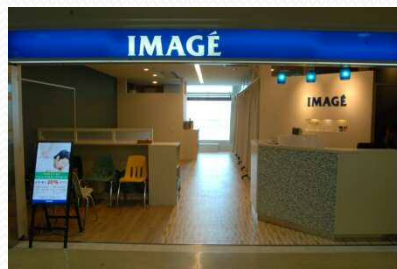


# Management store introduction /Direct management shop

- Melsa SAKAE      3-4-5 Sakae-Nakaku-Nagoya-Aichi. / Melsa SAKAE 4F.

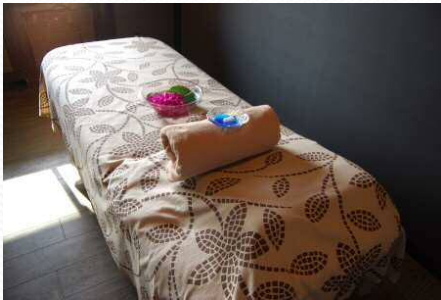


- NAHA AIRPORT      150 kagamizu-Naha-Okinawa. / 3N-07.



## Management store introduction /Hotel Spa contracted management

- SPA IBUKI      3-3-1 Shiba-koen, Minatoku- Tokyo./ Tokyo Prince Hotel



- KAEDE SPA      144-Motohakone-Hakonemachi-Ashigarashimo-Kanagawa./  
The Prince Hakone Lake Ashinoko

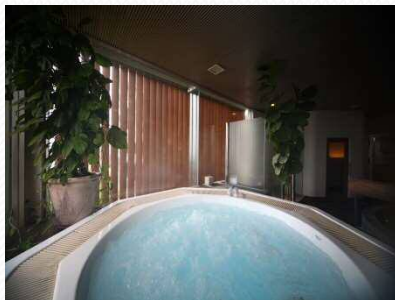


## Management store introduction /Hotel Spa contracted management

- Spa ASAGAO 139-Motohakone-Hakonemachi-Ashigarashimo-Kanagawa./Mt.Fuji & Lake Ashi view from onsen RYUGUDEN



- SPA the CEADA 1-kankaiji-beppu-Oita./ Hotel Suginoi .





## Management store introduction /Hotel Spa contracted management

- SUN SPA ASTORIA PALAWAN ( Puerto Princesa, Philippine )

